

What is NewzCrawler?

NewzCrawler is a web news aggregator, RSS reader, browser and blog client which provides access to news content from various sources:

- Syndicated news given in XML-based formats (RSS, Atom, BackSlash etc.).
- Usenet (NNTP) newsgroups;
- Web pages (HTTP);

It gathers news content from each source channel and displays them in a number of views: News List, News Balloon and News Ticker. NewzCrawler is similar to an ordinary MS Outlook Express-like user interface, it supports many back-end headline syndication file formats and embeds web browser for extra fast news surfing.

The main difference from similar software is that NewzCrawler rapidly retrieves news from various web sources in background and displays them in comfortable customizable views. It is the only solution available that combines RSS, Atom, Newsgroups and Web pages.

What NewzCrawler will do for me?

With the help of the NewzCrawler you'll be able to:

- Read news headlines and it's brief descriptions either online or offline;
- Be informed about the latest received news in elegant yet non-intrusive manner (News Ticker & News Balloon);
- Browse news web sources in the built-in browser or in your default browser.
- E-Mail news and web pages to your friends;
- Organize channels in a fully customizable tree view;
- Search news using keywords with many search options;
- Add newsfeed channels via given URL or by selecting it from the OCS (Open Content Syndication) Directory lists;
- Add Usenet newsgroups channel;
- Add webpage channel for online and offline reading;
- Use MS Agent characters to listen to the news, without reading them.

User interface and appearance

- fast and simple installation/deinstallation;
- first-run automatic configuring;
- multi-user support;
- habitual MS Outlook Express-like style;
- customizable color schemes;
- context menus for frequently used actions;
- context-sensitive help;
- possibility of minimization to the system tray area and working in background;
- customizable tree-like subscription structure.
- site icons support (favicon.ico files);
- wizards letting the user add news channels in an error-free yet simple manner;
- channels folder export and import (including subfolders) for channels exchange;
- marking unread headlines in bold;
- headlines sorting by date, flag state, read/unread state, author etc.;
- preview news descriptions in embedded quick-view browser (Internet Explorer and Mozilla rendering engines are supported);
- highly configurable News Ticker window with crawling headlines. News Ticker can be docked to the desktop's top or bottom so that other programs could not overlap it's window. Customizable on-click action in the News Ticker window.
- non-intrusive News Balloon window for keeping the user informed about breaking news;
- MS Agent support for speech synthesis so that NewzCrawler could talk to you (sound card required);
- search window with many search options and with results preview;
- virtual search channels;
- customizable main window layout;
- UNICODE support;

Connection

- Newzcrawler downloads syndicated news content using HTTP protocol;
- Newzcrawler downloads Usenet newsgroups content using NNTP protocol;
- Newzcrawler downloads web pages content using HTTP protocol;
- both HTTP and NNTP support basic authentication for password protected resources;
- HTTP supports digest authentication;
- HTTP supports proxy with proxy login;
- Newzcrawler reads up to 20 channels simultaneously for fast channels update on high bandwidth connections;
- Newzcrawler provides traffic-saving technologies (conditional GET, GZip encoding support);
- Newzcrawler provides Online and Offline modes - no traffic in offline;
- Automatic channel updates are available - periodical checking channel for updates, update intervals are individual for each channel;
- Internet connection availability detection - when in Online mode program tries to download news only when Internet connection is available;
- news content synchronization for downloading news marked for offline reading;
- NewzCrawler supports Dial-up networking;

News preview, browsing and exchange

- built-in browser (Internet Explorer and Mozilla render engine support);
- default browser support;
- customizable HTML-based templates for viewing;
- support of basic character encodings;
- grouping messages in conversation threads;
- CommentAPI support;

- CommentRSS and BlogComments support;
- quotation color-highlighting for simplifying newsgroups conversations reading;
- message flagging;
- news caching for offline reading and searching;
- multiple browser windows for surfing online news sources;
- browser window flashing for indicating that web page downloading has been completed;
- news printing;
- ability to send news and any web pages via E-Mail (E-Mail client with MAPI support required);
- copying news to clipboard;

Supported formats

Syndicated news content producers generate back-end headline syndication files in different XML-based formats. Our parser automatically recognizes format of the given channel so you don't have to specify format directly. If NewzCrawler doesn't support the given file it will show an error message:

"Unknown newsfeed format". Here's the list of supported formats:

- RSS 0.9 - 1.0 (RDF);
- RSS 2.0
- Atom
- BackSlash;

Some news content producers such as NewsIsFree, MoreOver, UserLand and others provide categorized lists (directories) of their channels in special XML format. Here's the list of supported directories formats:

- OCS (Open Content Syndication);
- OPML;

News Posting

- Newzcrawler supports Blogger API, Metaweblog API, MovableType API and LiveJournal API;
- Newzcrawler can post to Usenet newsgroups;

Your system must accord to the following minimal requirements in order to run NewzCrawler properly:

- Pentium-compatible processor;
- Windows 95/98/NT4/Me/2000/XP;
- 64 MBytes of RAM (128 MBytes recommended);
- 4 MBytes of HDD space;
- Internet connection (permanent or dial-up);

In order to gain access to all features (optional) you need:

- E-Mail client with Simple MAPI support for sending news and web pages;
- MS Internet Explorer 4.0 or higher for fast news browsing;
- Sound card and MS Agent v.2.1 or higher for speech synthesis;

You may use the NewzCrawler product free of charge while evaluating it. The evaluation period is limited to 14 days. After evaluating you must either buy this software or remove it from your computer. After purchasing you will receive the software registration code to remove trial limitations. Your registration code will be emailed to you within two business days after your order has been processed.

After registering the software you will get the following benefits: no trial limitations; free upgrades within major versions and priority technical support via e-mail.

Ordering information

The registration fee for single copy of the NewzCrawler is US **\$24.95** only. If more than one person needs to use NewzCrawler at the same time you have to register each of these copies.

Discounts are available! Please contact us at sales@newzcrawler.com for additional information about group licenses.

Order online

Online registration is the fastest and easiest way of purchasing. The ordering page is on a secure SSL server, ensuring safety of your confidential information. All major credit cards are accepted.

[Order NewzCrawler](#)

Order via phone, fax or postal mail

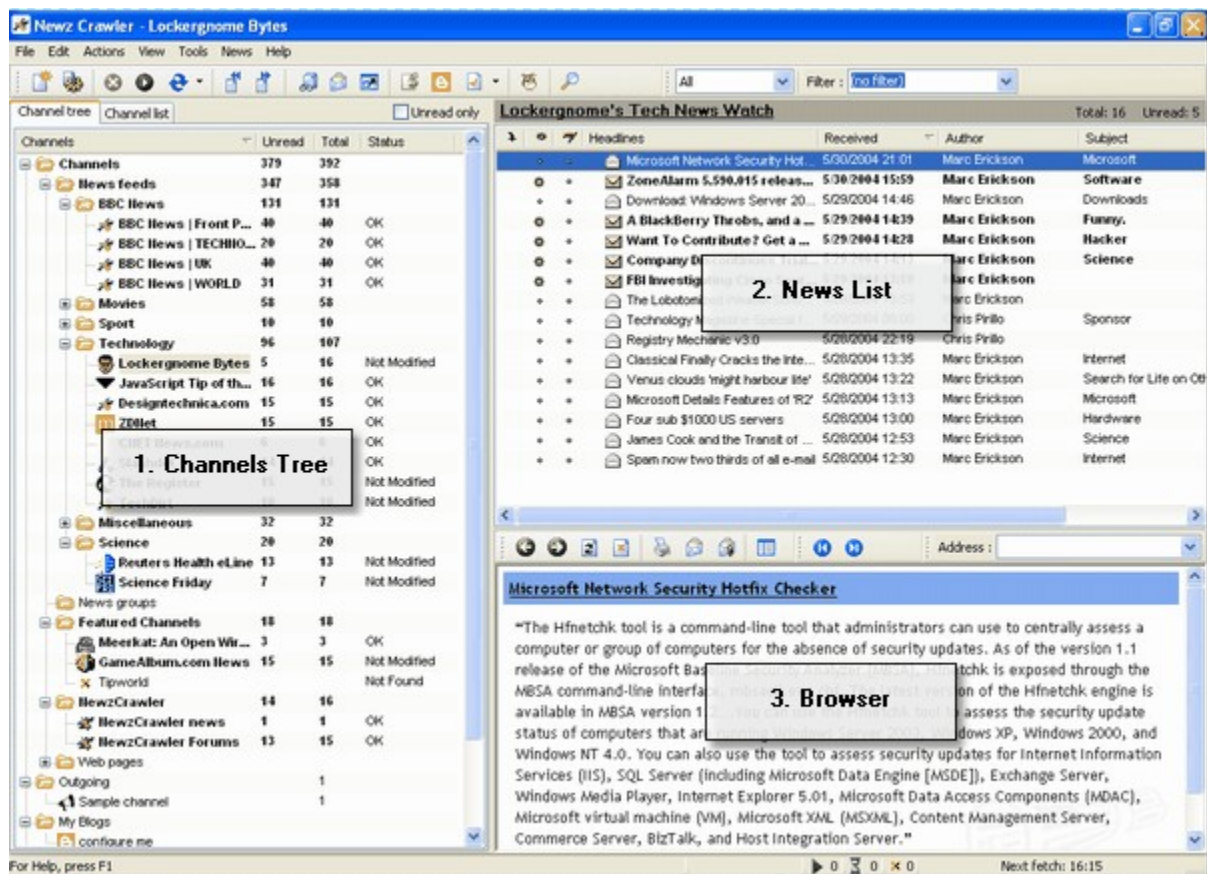
If you do not have an access to the Internet, you can purchase Newzcrawler via phone, fax or postal mail. Please fill in and print out the [order.frm](#) file, and fax or mail it to:

element 5 AG / ShareIt!
Vogelsanger Strasse 78
50823 Koeln
Germany
Phone: +49-221-2407279
Fax: +49-221-2407278
E-Mail: register@shareit.com

US and Canadian customers may also order by calling 1-800-903-4152 (orders only please!). US check and cash orders can be sent to the US office at:

ShareIt! Inc.
PO Box 844
Greensburg, PA 15601-0844
USA
Tel. 724-850-8186
Fax. 724-850-8187

NewzCrawler offers an easy-to-use three pane interface:



Main window includes:

- Main Menu
- Tool Bar
- Channels Tree
- News List
- Quick Browser

See also: Main window layouts.

Toolbar provides you with fast access to the most frequently used functions.



New channel or folder. Click this button to bring drop-down menu with commands that let you add new folder or channels of different types.



Properties (Alt+Enter). Shows the properties window for currently selected channel or folder.



Stop. Stops updating the currently selected channel or folder.



Update (F5). Starts updating the currently selected channel or folder.



Synchronize (F7). Click this button to synchronize the currently selected channel or folder for offline reading.



Previous unread (Alt+Up) \ Next unread (Alt+Down). Click this buttons to move to the previous or next unread news item respectively.



Catch up (Ctrl+Alt+R). Marks the current channel or folder as read.



Send News by E-Mail. Click this button to email the current news item. Your email client software must support Simple MAPI in order to use this command.



Maximize Browser (F11). Maximizes and restores the browser pane.



Create News. Opens the news composer window. Available for Newsgroup and Outgoing channels only.



Reply to Group. Newsgroup Channels only. Allows to send a reply message to the current article.



Comment This!. Newsfeed Channels with Comment API only. Allows to send a comment messages to the weblogs supporting Comment API.



BlogThis!. Click this button to open current news in the [Blog Client](#).



Toggle read/unread. Click this button to mark current news as read or unread. Click black arrow to bring up the drop-down menu with other commands: flagging and offline content.



Agent. Shows or hides an MS Agent character. When agent is visible it will pronounce all news through your sound card.



Search News. Opens Search News window.

Channels Tree allows you to organize the structure of the channels you're subscribed to. Channels Tree consists of folders and channels of different types.

There are several default top-level folders:

Channels. Contains [Newsfeed](#) and [Newsgroup](#) channels.

Outgoing. Contains [Outgoing channels](#).

My Blogs. Contains [Weblog sites](#).

Search. Contains [Search Channels](#).

Favourites. Contains [Favourite keepers](#).

You can hide top-level folders using [Preferences\Appearance](#) options.

You can create nested subfolders in order to categorize the structure of channels according to your preferences. You can organize the channels tree by creating, deleting and moving channels. For more details check out the [Managing Channels Tree](#) topic.

There are four columns in the Channels Tree: Channels, Unread, Total and Status. The Channels column displays channels, folders and the tree structure. Unread and Total columns display the number of unread and total number of items in the channel or folder. Status column displays the status of the particular channel. When channel is idle status displays either "OK" (channel has been updated successfully) or "Not modified" (channel has not been modified since last fetch). If there was an error during update the error message will be displayed. Choose the **View | Channels Tree Columns** menu to [configure the columns appearance](#).

The News List pane displays the news items for current channel or folder. There are several columns in the news list: Headlines, Author, Subject, Channel, Received, Download later, Flagging, Read\ Unread. Choose the **View | News List Columns** menu to configure the columns appearance.

Click the column title to sort the news items by this column. Click the column once more time to change sorting direction. Unread items are displayed in bold.

Double-click the news item in order to open the news source in your default browser.

Use **Up** and **Down** arrow keys to navigate through the list up and down. Press **Space** bar to move to the next unread item. If the news is lengthy and browser has a scroll bar then pressing the Space bar will scroll the browser pane. This allows you to read the news using the single Space bar key.

Right-click the news item to bring up the news context menu.

The Browser pane displays the content of the current news item and allows you to use it as a quick browsing tool. Press F11 key to maximize the browser (Channels tree and News List will be hidden). Press F11 once more time to restore the browser.

NewzCrawler supports Internet Explorer or Mozilla browser engines.

Clicking the links will navigate browser to a new location. If you want to open the links in your default browser hold down the Shift key when clicking the link.

Browser has a popup window blocking feature. Hold down the Ctrl key when clicking the links to prevent the work of the popup blocking feature.

You can choose one of two layouts of NewzCrawler main window:
full-height sites tree;
full-width browser.

Both are comfortable and easy-to-use so you can choose the best for you.

Choose the **View | Layout** menu to change the layout.

Choose **Tools | Search news** menu to open the *Search News* window.

Search News window allows you to search for news items by keywords or phrases. You can specify by which fields you'd like to search. Also you can select the folder in which the search starts. After filling search options press **Search** button to perform searching. The found news items will be displayed in the Results tab. Click the news item to display in the search window browser. Double-clicking the news item or pressing the **Follow** button will focus the news item in the NewzCrawler main window.

Search criteria rules:

- keywords are space-delimited
- use quotes to search for phrase
- use + to specify the keyword or phrase you want to see in the search results
- if a keyword or phrase is essential to get the results you want, you can include it by putting a "+" sign in front of it.
- you can exclude a keyword or phrase from your search by putting a minus sign ("-") immediately in front of the term you want to exclude.

Search criteria examples:

blog software	search for news items containing "blog" or "software"
"space shuttle"	search for news items containing phrase "space shuttle"
blog "space shuttle"	search for news items containing either "blog" or "space shuttle"
rss +reader -macos	search for news items containing "rss" and "reader" but not containing the "macos"

Options

Text to find

Enter search keywords in this text field.

Scope

This drop-down list lets you specify the folder in which the search will be performed.

Subfolders

Check this box if you want to search for news in all subfolders recursively.

Whole words

Check this box to search keywords as whole words.

Case sensitive

Check this box to search keywords case sensitively.

Title

Check this box if you want to search for keywords in news items' titles.

Description

Check this box if you want to search for keywords in news items' descriptions.

URL

Check this box if you want to search for keywords in news items' URLs.

Choose **Actions | Synchronize** menu to open the Synchronization window.

Synchronization window allows you to update channels and download news items marked for offline reading. If you use dial-up connection synchronization window will dial selected connection, update channels and then disconnect automatically thus saving your online time.

Start

Press this button to begin synchronizing.

Skip

Press this button to skip currently updating channel.

Close

Press this button to close window.

Disconnect after completion

Check this box if you want NewzCrawler to disconnect with internet when synchronization process finished.

Choose **Tools | Blog client** menu to open the Blog Client window.

Blog Client window allows you to compose your messages and post them directly to your blog. Your blog should be able to accept XML-RPC calls and to support one of the following APIs: Blogger API, Metaweblog API, MovableType API and LiveJournal API.

Before using the Blog Client you'll have to create a [Weblog Site](#) which provides access to your web blog.

New Post

Click this button to clear all edit fields.

Get Last Post

Click this button to retrieve the last post from the current blog.

Post

Click this button to post the message to current blog without publishing it on the blog home page.

Publish

Click this button to post the message to current blog and publish it on the blog home page.

Stop

Click this button to stop posting or publishing

Home Page

Click this button to open the home page of the current blog in default browser.

There are several ways to update a single channel, a set of channels or the whole folder:

Manual updating

- Click a channel or folder and, then choose **Actions | Update** menu;
- Select several channels and/or folders by holding the CTRL key and left-clicking them with the mouse. Then press the F5 key.
- Right-click a channel or folder, then choose **Update** menu.

Automatic background updating



Enable automatic updates for channels you want to have updated periodically without manual intervention. See [Newsfeed Channel Properties](#) for details.

Choose **View | News Ticker** menu to display the News Ticker window.

The News Ticker window is a very comfortable way to stay in touch with the latest news titles. With News Ticker window you can view crawling news titles without being distracted from your primary work. Just one click on interesting title leads you to the short news description or to the full article on the Internet in your browser.

The News Ticker window has a plenty adjustment parameters such as colors, animation type, animation speed etc. News Ticker window also could be either floating or docked to the desktop that makes the work with other software comfortable.

Choose **View | Agent** menu to display the Agent character.

NewzCrawler supports MS Agent characters and speech engine to pronounce the news through a sound card. In order to use MS Agent in the NewzCrawler properly you will have to download and install the following components at the Microsoft Agent Home Page:

- Microsoft Agent core components;
- Microsoft Agent character files. There are several characters available for download, and at least one character file is required;
- Text-to-speech engine for American English;
- Optional Speech Control Panel.

Creating a folder

Adding a channel

Configuring channels and folders

Deleting channels or folders

Organizing channels tree

Exporting/Importing Channels

Follow the steps below to create a new folder:

1. Select the folder in which the new folder should be created.
2. Choose **Channel | New | New Folder...** menu.
3. Fill in the name of the folder in the folder properties window and press OK.

See also:

[Folder properties](#)

NewzCrawler features several types of channels for working with different types of news content:

Newsfeed Channel
Newsgroup Channel
Webpage Channel
Outgoing Channel
Weblog Site
Search Channel
Favourites Keeper

Follow the steps below to create a new channel:

1. Select the folder in which the new channel should be created.
2. In the **Channel | New** menu choose appropriate channel type.

Follow the steps below to edit the properties of the channel or the folder:

1. Select the channel or the folder which you want to configure.
2. Choose **Channel | Properties...** menu.
3. Modify the properties in the properties window and press OK button.

Note that you can edit the properties of several one-type channels at the same time. To do this:

1. Select several channels of the same type (i.e. news feed channels only) by holding the CTRL key and clicking them by left mouse button.
2. Choose **Channel | Properties...** menu. Note that this menu is disabled when the channels of different types are selected.
3. Modify the properties in the properties window and press OK button.

Follow the steps below in order to delete the channel or the folder:

1. Select the channel or the folder which you want to delete. To delete more than one channel or folder at the same time select them by holding CTRL key and clicking by left mouse button.
2. Press Delete key or choose **Edit | Delete** menu.
3. Press Yes in the message box window.

Note that deleted items cannot be undeleted.

Channels Tree allows you to construct the folder structure of almost unlimited complexity and nesting:

Use the following features to organize the Channels Tree:



Adding folders



Drag-And-Drop. Use drag-and-drop to move channels and/or folders in and out of the folders.



Manual sorting. Use ALT+SHIFT+UP and ALT+SHIFT+DOWN shortcuts to move items up and down within the owner folder.



Alphabetic sorting. Right-click the folder and choose "**Sort by Name**" menu.

NewzCrawler allows you to export and import the whole channels tree or a particular folder.

Exporting channels

1. Select the folder you want to export.
2. Choose **Channel | Export Folder...** menu.
3. Select the output type:
 - NewzCrawler Channels (*.ncw)
 - Open Content Syndication Directory (*.ocs). OCS files are exported using templated output (files OCS_MAIN.TEM, OCS_CHANNEL.TEM, OCS_FORMAT.TEM, located in the "Newz Crawler\Templates" folder).
 - OPML files (*.opml).
4. Specify the file name and press Save button.

Importing channels

1. Choose the **Channel | Import Folder...** menu.
2. Select input file format:
 - NewzCrawler Channels (*.ncw)
 - OPML files (*.opml).
 - Unix mailbox files (*.txt).
3. Select the file and press Open button.

Use Newsfeed Channels for reading RSS/Atom XML feeds.

A Newsfeed Channel can be added in two different ways:

By entering the news feed URL

Use this way if you know the exact news feed URL. Follow the step-by-step procedure:

1. Choose **Channel | New | New Newsfeed Channel...** menu to open the *Add Newsfeed Channel* wizard.
2. Choose the "Enter newsfeed channel URL" option and click Next.
3. Enter the news feed URL. Check the "Download and verify" box to verify if the channel is valid. Click Next to continue.
4. Enter the name of the new newsfeed channel. Click Next to continue.
5. Select the folder where you'd like to place the new channel and click Next.
6. Click Finish button to finish and close the wizard.

By selecting news feed(s) from OCS Directory

Use this way if you want to add a new channel from some OCS Directory.

1. Choose **Channel | New | New Newsfeed Channel...** menu to open *Add Newsfeed Channel* wizard.
2. Choose the "Choose channel from OCS or OPML Directory or file" option and click Next.
3. Select OCS Directory from the drop-down list. Check "Use currently cached file instead of downloading again" box to use cached data if you've already downloaded this OCS Directory and don't want to download it again. Click Next to continue.
4. Check channels you want to be added. Enter comma- or space-separated keywords in the Search criteria field to filter OCS Directory channels. Click Next to continue.
5. Check Verify channels box to download and verify the channel(s) to be added. Uncheck this box to skip verification. Note that every channel has it's own check box. Only checked channels are verified and then added.
6. Select the folder where the new channel(s) will be placed and click Next.
7. Click Finish button to close the wizard and add a new channel(s) to the channels tree.

See also:

[Newsfeed Channel properties](#)
[RSS resources](#)

Use newsgroup channel to read Usenet newsgroups via the NNTP protocol.

Follow the steps below to add a newsgroup channels:

1. Choose **Channel | New | New Newsgroup Channel...** menu to open *Add Newsgroup* wizard.
2. Select the News server from the drop-down list. Press the Manage button to add, remove or modify the news servers.
3. Check the "Download newsgroup list from server" box to download the full list of newsgroups of the selected news server. If you have already downloaded it before you can uncheck this box to use cached data instead of downloading again. Click Next to continue.
4. Check newsgroup(s) you want to be added. Enter comma- or space-separated keywords in the Search criteria field to filter newsgroups. Click Next to continue.
5. Select the folder where you'd like to place the new newsgroup channel(s) and click Next.
6. Click Finish button to finish and close the wizard.

See also:

[Newsgroup Channel properties](#),

[Posting and replying to newsgroups](#).

Use webpage channel to read the webpages for sites that don't provide RSS/Atom feeds. The webpage will be downloaded and you'll be able to read the webpage offline.

Follow the steps below to add a Webpage Channel:

1. Select the folder where new Webpage channel should be placed.
2. Choose **Channel | New | New Webpage Channel...** menu.
3. Fill in the Name and URL fields.
4. Press OK button to finish.

See also:

[Webpage Channel properties](#)

Use Outgoing Channel to output the news items to a text files using templates. Templates are user-defined so you can output data as HTML, XML files etc.

Follow the steps below to add an Outgoing Channel:

1. Select the folder in which the new Outgoing channel should be created.
2. Choose **Channel | New | New Outgoing Channel...** menu.
3. Fill in the Outgoing Channel's properties.
4. Press OK button to finish.

Weblog Site provides access to your web blog account. Weblog Sites are used by Blog Client for working with your web blog service(s) via XML-RPC calls.

Follow the steps below to create a Weblog Site:

1. Click the **My Blogs** folder.
2. Choose **Channel | New | New Weblog Site...** menu to bring up the *New Weblog Site* window.
3. Fill in the properties of the Weblog Site.
4. Press OK button to finish.

After creating the Weblog Site it will be connected to your web blog service and retrieve the list of your blogs. Blogs will be displayed in the Channels Tree under the Weblog Site.

Search channels contain items which are just links to the items in the regular newsfeed channels. You just need to specify the search criteria to filter the items into search channels. A single item can reside in several search channels. If you delete the news item physically, it will be removed from all search channels simultaneously. Search criteria is the combination of keywords and/or phrases. The search channel searches for items the same way as the search window works.

Follow the steps below to create a search channel:

1. Click the **Search results** folder.
2. Choose **Channel | New | New Search Channel...** menu to bring up the *New Search Channel* window.
3. Fill in the properties of the search channel.
4. Press OK button to finish.

See also:

[Search Channel properties](#),

[Search News window](#)

Favourites Keeper is a storage place for interesting news items. Favourites Keeper stores the news items permanently. Drag-and-drop the news items onto the favourites keeper in order to copy the news to the keeper. The second way is to right-click the news item and choose Copy to Favourites menu.

Follow the steps below to create a search channel:

1. Click the Favourites (or any inner) folder.
2. Choose **Channel | New | New Favourites Keeper...** menu.
3. Fill in the name of the new favourites keeper.
4. Press OK

NewzCrawler contains a built-in [Blog Client](#) that allows you to post your messages to the weblogs using different XML-RPC APIs.

Follow the steps below to post a message to a blog:

1. Choose **Tools | Blog Client** menu.
2. Select the blog site and the blog using two pick-lists.
3. Fill in the title (if the blog service supports titles) and the message body.
4. When finished press Post News button or CTRL+Enter shortcut to publish the message to your blog home page.

Note: you must be in online mode and have an active connection to the Internet in order to post successfully.

See also:

[Blog Client](#)

[Weblog Sites](#)

NewzCrawler supports posting to usenet newsgroups. Also you can reply to other's messages.

Posting

To post to the newsgroup:

1. Select the newsgroup channel.
2. Choose **News | Create News** menu.
3. Fill in the message subject and body.
4. When finished press Post News button or CTRL+Enter shortcut to post the message to the newsgroup.

Replying to newsgroup

1. Select the newsgroup channel.
2. Choose **News | Reply to Group** menu.
3. Write your reply in the message composer.
4. When finished press Post News button or CTRL+Enter shortcut to post the reply message to the newsgroup.


Note: you must be in online mode and have an active connection to the Internet in order to post successfully.

Follow the steps below to post news to an Outgoing Channel:

1. Select the Outgoing Channel.
2. Choose **News | Create News** menu.
3. Fill in the news title, URL and description.
4. When finished press Post News button or CTRL+Enter to save news in the Outgoing Channel.

Choose **Tools | Preferences** to display the Preferences dialog box. Use the pages of this dialog box to specify configuration preferences, connection options and to customize the appearance of the application.

The pages of the Preferences dialog box are:

-  [General](#)
-  [Database](#)
-  [Agent](#)
-  [Read](#)
-  [Post](#)

-  [Appearance](#)
-  [Colors](#)
-  [Style](#)
-  [News Balloon](#)
-  [News Ticker](#)

-  [Connection](#)
-  [Proxy settings](#)
-  [Protocol](#)

-  [Servers](#)
-  [Newsgroups](#)

-  [User Info](#)
-  [Signature](#)
-  [Now playing](#)

-  [RSS Autodiscovery](#)

Use the Behavior page of the Preferences dialog box to specify the common behavior of NewzCrawler.

Run minimized

It forces NewzCrawler to minimize itself after startup. Use this option if you prefer to run NewzCrawler in background.

Minimize application instead of closing

Check this option if you'd like to minimize NewzCrawler when clicking the X button instead of shutting down the application.

Minimize application to tray

It hides NewzCrawler's taskbar button and displays an icon in the system notification area when minimized.

Animate tray icon when

Choose when you'd like to see the NewzCrawler icon animated: when there are unread items or when there are active tasks.

Check website for updated version

Check this option if you'd like to be notified about new versions available for download.

Do not check all channels at startup

It forces NewzCrawler not to check all channels at startup by delaying the updates for several minutes.

Check channel after creation

It forces NewzCrawler to update channel automatically just after subscribing to this channel.

Disable channels automatic updating

Check this option if you don't want NewzCrawler to update channels automatically.

Do not load channels icons

Check this option if you don't want NewzCrawler to download the channels icons (favicon.ico).

Use render engine

Choose the rendering engine that NewzCrawler should use. Supported: Internet Explorer and Mozilla (Gecko).

In order to be able to use Mozilla rendering engine you'll have to download and install the latest Mozilla ActiveX Control. Mozilla Control installer is available here:

<http://www.iol.ie/~locka/mozilla/mozilla.htm>

Note: restart is required.

Use the Database page of the Preferences dialog box to change the location of the NewzCrawler database.

Press the **Change** button to choose the new location of the database. All database files will be copied into the new location.

If there's a database in the new location already NewzCrawler will ask you to overwrite the existing database with current database or to switch to the existing database.

Use the Agent page of the Preferences dialog box to configure MS Agent character which could be used for speech synthesis.

Use MS Agent if available

Check this box to use MS Agent. Uncheck this option if you don't want to use MS Agent in order to insignificantly decrease memory usage. Note: change affects after restarting program.

Character

Specifies the character file name. MS Agent characters are stored in *.ACS files and typically placed in the Windows system directory such as C:\WINDOWS\MSAGENT\CHARS. Use "Browse for character button" to select character file using standard *File open* dialog.

Agent Properties

Press this button to open *Advanced Character Options* dialog for detailed configuring the character.

Automatically pronounce news title if available

Check this box if you want Agent to pronounce the news automatically when clicking the news item.

Use the Read page of the Preferences dialog box to specify the parameters regarding reading the news.

Mark news as read after

Specifies the delay in seconds before news is marked as read.

Mark all news as read when leave a channel

Check this option if you'd like to mark all news items as read when you leave a channel by selecting another channel or folder in the Channels Tree.

Open news source in Quick-view if news description is empty

Forces NewzCrawler to open an actual article on the web if the description of the news item is empty.

Always open news source in Quick-View

Check this option if you want NewzCrawler to open the full article in the Browser automatically even if the news item has a description.

On news double-click

Specifies the action performed on double-clicking the news item in the News List.

Email news as HTML instead of plain text

Check this option if you would like to enable HTML markup in the email messages. Uncheck this option if you'd like to send the news by email as a plain text.

Use the Post page of the Preferences dialog box to specify some posting options.

Normalize HTML tags before posting to a blog

Check this option if you need to process the HTML code when posting to the blogs. NewzCrawler will convert all HTML tags to lower case.

Wrap plain text messages

Specify the maximal line width of the plain text. Specify zero value if you don't want to wrap the lines.

Use the Appearance page of the Preferences dialog box to configure the exterior options.

Hide Outgoing folder

Check this option if you'd like to hide the **Outgoing** folder in the channels tree.

Hide My Blogs folder

Check this option if you'd like to hide the **My Blogs** folder in the channels tree.

Hide Search Results folder

Check this option if you'd like to hide the **Search results** folder in the channels tree.

Hide Favourites folder

Check this option if you'd like to hide the **Favourites** folder in the channels tree.

Striped Channels Tree

Check this option if you would like to see the channels tree striped (even and odd lines have slightly different background color).

Channels Tree Font & Size

Allows you to choose the font and font size used for displaying the channels tree.

Striped News List

Check this option if you would like to see the news list striped (even and odd lines have slightly different background color).

News Tree Font & Size

Allows you to choose the font and font size used for displaying the news list.

Use the Colors page of the Preferences dialog box to customize the color appearance of NewzCrawler.

Use Windows Colors

Select this option to make NewzCrawler use system colors like other Windows applications.

Use Color Schemes

Select this option to make NewzCrawler use it's own customizable color schemes. Color scheme is a set of colors used by NewzCrawler to customize it's appearance.

Color Scheme

Specifies the currently selected color palette.

Save current scheme

Saves the current scheme. You'll be asked for the name of the scheme.

Delete selected scheme

Deletes the currently selected scheme.

Get current system colors

Copies the current Windows colors to the current color scheme.

Use the Style page of the Preferences dialog box to choose the style of the quick-view browser, newspaper etc.

Quick-view visual style

Allows to choose the style from the list of available CSS styles. Look for CSS files in the "Templates\ Styles" folder.

Note: if you add, remove or modify CSS styles you'll have to restart the program to introduce the changes.

Use the News Balloon page of the Preferences dialog box to customize the behavior and appearance of the News Balloon which alerts you when the channel updates.

Enable News Balloon

Check this box to turn the News Balloon on and get alerted on news arriving.

Use system hint colors

Check this box to make the News Balloon use system hint colors. Uncheck this box to make News Balloon to use current NewzCrawler color scheme.

Max visible news

Specifies the number of visible news in the News Balloon window.

Autohide timeout

Specifies the time in seconds before automatical closing the News Balloon window.

Open news in

Specifies action performed on clicking or double-clicking the news in the News Balloon window.

Play sound on news arrival

Check this button to play sound on news arriving.

Audio file

Specifies an audio file to be played on news arriving. Click "Browse for audio file" button to select an audio file using standard *File Open* dialog. Click "Test sound" button to play specified audio file.

Use the News Ticker page of the Preferences dialog box to configure the appearance and behavior of the News Ticker window.

Appearance

Ticker window always on top

Check this box to make news ticker window always above all windows on your desktop and therefore always visible.

Dock window

Check this box to dock News Ticker's window to the top or to the bottom of the desktop.

Animation

Specifies the animation type used for displaying the news title. There are three types of animation available: scroll vertically, scroll horizontally and color fade.

News Ticker Font & Size

Allows you to choose the font name and size used for displaying the news title.

Individual News Ticker colors

Check this button if you want to specify the News Ticker window colors that differ from the current NewzCrawler's color scheme. There are two color drop-down selectors which allow you to specify background and text colors.

Options

Slow down news in the center

Check this box to slow the news title text when it reaches the center of the window. The pause duration is specified with the **Pause delay** parameter.

Show today news only

Check this box if you want to see today news only.

Show unread news only

Check this box if you want to see unread news only.

Pause delay

Specifies the duration of the pause in the center of the window while scrolling news (look **Slow down news at center**).

Horizontal step

Specifies the horizontal step of scrolling in pixels. The higher is horizontal step value the higher the speed of horizontal scrolling.

Vertical step

Specifies the vertical step of scrolling in pixels. The higher is vertical step value the higher the speed of vertical scrolling.

Use the Connection page of the Preferences dialog box to specify the Internet connection details.

Local Area Network or manual connection

Select this option if you have a permanent Internet connection or if you connect manually.

Dial-up networking connection

Select this option if you have dial-up Internet connection and want NewzCrawler to use this connection.

Using

Specifies which dial-up connection will be used.

Disconnect after completion

Specifies whether NewzCrawler should disconnect automatically after completing the synchronization.

Simultaneous connections

Specifies the maximal number of simultaneously updating channels. Allows you to utilize your bandwidth effectively.

Use the Proxy settings page of the Preferences dialog box to specify additional details of the Internet connection for those who access Internet using proxy server.

Use Proxy Server

Check this box if you connect to the Internet via HTTP proxy server.

Server

Specifies the name of your proxy server

Port

Specifies the port number of your proxy server

Proxy login required

Check this box if your proxy server requires authentication. Note: only basic authentication is supported.

Username

Specifies the proxy server username.

Password

Specifies the proxy server password.

Do not use proxy for addressess beginning with

Allows you to specify the list of addresses which should be accessed without using the proxy server. Use semicolons (;) to separate the entries. Use wildcards (* and ?) to specify the mask. Example:
**.microsoft.com;localhost;127.0.0.1;*

Use the Protocol page of the Preferences dialog box to configure protocols options.

User Agent

Choose which user-agent string NewzCrawler should use in it's HTTP protocol requests.

Accept gzip encoding

Uncheck this option if you don't want NewzCrawler to accept GZip-encoded data. Please note that by disabling GZip encoding you'll increase your net traffic. Check this option in order to significantly reduce your traffic and thus to increase download speed.

Use the Servers page of the Preferences dialog box to add, remove or modify the list and properties of an OCS and NNTP servers.

OCS Directories

Select this option to view and modify the list of OCS directories.

News servers

Select this option to view and modify the list of NNTP servers.

Add

Press this button to add OCS Directory or NNTP server. Specify the server name and URL in the Add server dialog. Check "Logon to server" box and fill "User" and "Password" fields if your OCS Directory or News server requires authentication.

Modify

Press this button to modify the properties of the currently selected OCS Directory or News server.

Remove

Press this button to remove the currently selected OCS Directory or News server.

Clear cache

Press this button to clear cached data of the currently selected OCS Directory or New server. Caching the data allows to add news feeds from OCS Directories and newsgroups from News servers without the actual Internet connection (or to save your time while downloading OCS Directory or News server's newsgroups from the internet).

Use the Newsgroups page of the Preferences dialog box to configure options related to reading Usenet (NNTP) newsgroups.

Group articles in threads

Check this box to group newsgroups messages by reference fields into conversation threads.

Expand message threads automatically

Check this box to automatically expand all conversation threads.

Load latest articles

Check this box to specify the maximal number of messages that should be downloaded.

Use the User Info page of the Preferences dialog box to specify your user details. User details will be used for composing and posting messages to Usenet newsgroups and Blogs.

User Name

Specifies the name of the user, for example: John Doe.

Organization

Specifies user's organization (optional), for example: XYZ company

User Email

Specifies user's email address, for example: johndoe@xyz.com

Reply To

Specifies user's email address on which you want to receive the replies. Specify this address only if it differs from the email address specified above.

Add a signature to outgoing news

Check this option if you want to sign your outgoing messages.

Use the Signature page of the Preferences dialog box to configure user signatures. Signature will be used for composing and posting messages to the Usenet (NNTP) newsgroups.

Add a signature to outgoing news

Check this box if you'd like to sign your messages.

Signature file

Specifies the location of the signature text file.

Use the Now Playing page of the Preferences dialog box to integrate NewzCrawler with multimedia players such as Windows Media Player and WinAmp.

Use Windows Media Player 9 Blogging plug-in

Check this box if you use Windows Media Player 9 Blogger plugin and want to add a tag line with the current music to your messages.

Use WinAmp AMIP (Advanced mIRC integration plugin)

Check this box if you use WinAmp AMIP plugin and want to add a tag line with the current music to your messages.

Filename

Specify location of the text file containing information about current music (if you use WinAmp AMIP plugin only).

Use the RSS Autodiscovery page of the Preferences dialog box to choose options of the RSS Autodiscovery feature.

Enable RSS Autodiscovery

Check this option to turn the RSS Autodiscovery feature on.

Pop up RSS Autodiscovery balloon

Check this option if you want the autodiscovery balloon hint window to pop up (Windows 2000/XP only).

Pop up RSS Autodiscovery window

Check this option if you want the autodiscovery window to pop up .

Click the folder and choose **Channel | Properties** to display the Folder properties window. Use the pages on the left side of the window to configure the selected folder.

The pages are:



Name



Maintenance

Use the Name page of the Folder Properties dialog to specify the primary parameters of the folder.

Name

Specifies the folder name.

Syndicate news for all underlying channels

Check this box if you want to see syndicated news list with the news items from all underlying channels. Building of the syndicated news list is a time-consuming operation so you can activate the syndicated news feature on a per-folder basis.

Open properties for all underlying channels

Click this button to configure all underlying newsfeed channels simultaneously.

File Name

Shows the name of the folder storage file.

Use the Maintenance page of the Folder Properties dialog to configure folder automatic updates.

Please note that every channel has its own options for configuring updates on a per-channel basis. Use folder maintenance options in addition to the channel options.

Enable automatic updating

Check this box if you want to periodically update the channels from the folder. You can set up the updating period by specifying it in Days, Hours and Minutes.

Update channel on program startup

Check this option if you want to update the channels under the folder just after every program startup.

Click the newsfeed channel and choose **Channel | Properties** menu to display the Newsfeed Channel properties window. Use the pages on the left side of the window to configure the newsfeed channel.

Pages:

-  [Location](#)
-  [Security](#)
-  [Maintenance](#)
-  [Appearance](#)
-  [Subscription](#)
-  [Log](#)

Use the Location page of the Newsfeed Channel Properties dialog to specify the primary parameters of the channel such as name, feed URL and so on.

Name

Specifies the newsfeed channel name. The newsfeed channel name will be displayed in the channels tree.

Feed Title (Read-only)

Shows the feed title as it appears in the newsfeed.

Feed URL

URL to the XML newsfeed. You can even point to the local XML file by specifying the file:// prefix. For example: file://c:\rss.xml

Image base

Some news feeds in old "slashdot" format contains links to the images. Some sites provide only, say, "cool.gif" without specifying the full URL to the image. To solve this problem and display the image properly the "Image Base" field has been added. This allows you to specify the prefix to the site URL, for example: <http://www.site.com/images/>. Combination of the "Image Base" and "cool.gif" gives a full image URL. Please note that this field is used to make the program compatible with old news feeds in "slashdot" format. Modern RSS formats don't require specifying any image bases.

Resolve source URLs

This option is useful for some news feeds providers which don't specify the actual URL of the full article in the Internet. For example, NewsIsFree provides URLs similar to the following one: <http://www.newsisfree.com/click/i,29157622,2587/>. Such links are expired very quickly. Check this option to make NewzCrawler resolve the links to actual URL so you can access the full articles at any time.

Do not load comments

There are a large amount of the newsfeeds supporting Comment RSS where every news item has a special news feed containing comments. Loading Comment RSS feeds takes some additional time. So you can disable it by checking this option. Please note: it will not speed up loading regular feeds without Comment RSS.

File Name

Shows the name of the newsfeed channel storage file.

Use the Security page of the Newsfeed Channel Properties dialog to specify the options for accessing a password-protected resources.

Server requires logon

Check this option if the newsfeed is password-protected and requires you to specify the user login and password. NewzCrawler supports Basic and Digest authentications.

User

Specifies the user login.

Password

Specifies the user password.

Use the Maintenance page of the Newsfeed Channel Properties dialog to configure the channel automatic updates options.

See also [folder maintenance options](#).

Enable automatic updating

Check this box to enable automatic updating of the channel. You can set up the updating period by specifying it in Days, Hours and Minutes.

Update channel on program startup

Check this option if you want to update the channel just after every program startup.

Delete news

Check this box to enable automatic news removing. You can specify either the number of days that news items will be stored for or the maximal number of the stored news.

Use the Appearance page of the Newsfeed Channel Properties dialog to configure the appearance of the channel.

Show news titles in News Balloon

Check this option to display the channel's news items in the News Balloon.

Show only summary

Check this option if don't want to see every news item in the News Balloon. When this option is checked, you'll see the single summary line in the News Balloon (for example: **Site name: 10 breaking news**).

Show news titles in News Ticker

Check this option to display the channel's news titles in the [News Ticker](#).

Use the Subscription page of the Newsfeed Channel Properties dialog to configure the synchronization options.

Update channel during synchronization

Check this option if you want the channel to be updated during the synchronization process. If this option is not checked and you are trying to synchronize the channel it will be skipped.

Receive headlines only

Select this option if you want to receive the news headlines and (where available) short news descriptions during the synchronization.

Receive headlines and news content

Select this option if you want the corresponding web pages to be downloaded in addition to the news headlines and descriptions.

Use the Log page of the Newsfeed Channel Properties dialog to enable\disable HTTP protocol logging.

Store server response

Check this option to enable logging of the HTTP protocol. Logging allows you to view the HTTP headers and data received from the web servers.

Click the newsgroup channel and choose **Channel | Properties** to display the Newsgroup channel properties window. Use the pages on the left side of the window to configure the newsgroup channel.

The pages are:

-  [Location](#)
-  [Security](#)
-  [Maintenance](#)
-  [Appearance](#)
-  [Subscription](#)
-  [Log](#)

Use the Location page of the Newsgroup Channel Properties dialog to specify the primary parameters of the channel such as name, server address and so on.

Name

Specifies the newsfeed channel name. The newsgroup channel name will be displayed in the channels tree.

Newsgroup

Specifies the newsgroup name in a particular news server.

Server

Specifies the news server address.

Port

Specifies the news server port number.

Use secure connection (SSL)

Check this option if the news server requires secured connection.

Get articles by ID

Check this option in order to retrieve articles by article IDs.

Encoding

Choose the appropriate messages encoding used in the newsgroup from this dropdown list.

File Name

Shows the name of the channel storage file.

Use the Security page of the Newsgroup Channel Properties dialog to specify the options for accessing a password-protected newsgroups.

Server requires logon

Check this option if the news server is password-protected and requires you to specify the user login and password.

User

Specifies the user login.

Password

Specifies the user password.

Use the Maintenance page of the Newsgroup Channel Properties dialog to specify the options to configure the channel-specific automatic updates options.

See also [folder maintenance options](#).

Enable automatic updating

Check this box to enable automatic updating of the channel. You can set up the updating period by specifying it in Days, Hours and Minutes.

Update channel on program startup

Check this option if you want to update the channel just after every program startup.

Delete news

Check this box to enable automatic news removing. You can specify either the number of days that news items will be stored for or the maximal number of the stored news.

Use the Appearance page of the Newsgroup Channel Properties dialog to configure the appearance of the channel.

Show news titles in News Balloon

Check this option to display the channel's news items in the News Balloon.

Show only summary

Check this option if don't want to see every news item in the News Balloon. When this option is checked, you'll see the single summary line in the News Balloon (for example: **Site name: 10 breaking news**).

Show news titles in News Ticker

Check this option to display the channel's news titles in the [News Ticker](#).

Use the Subscription page of the Newsgroup Channel Properties dialog to configure the synchronization options.

Update channel during synchronization

Check this option if you want the channel to be updated during the synchronization process. If this option is not checked and you are trying to synchronize the channel it will be skipped.

Receive headlines only

Select this option if you want to receive the articles titles only during the synchronization.

Receive headlines and news content

Select this option if you want to download the full articles during the synchronization.





Use the Log page of the Newsgroup Channel Properties dialog to enable\disable NNTP protocol logging.

Store server response

Check this option to enable logging of the NNTP protocol. Logging allows you to view the NNTP protocol exchange between the NewzCrawler and news server.

Click the webpage channel and choose **Channel | Properties** to display the Webpage channel properties window. Use the pages on the left side of the window to configure the webpage channel.

The pages are:

-  [Location](#)
-  [Security](#)
-  [Maintenance](#)
-  [Log](#)

Use the Location page of the Webpage Channel Properties dialog to specify the primary parameters of the channel such as name, URL etc.

Name

Specifies the name of the webpage. The webpage channel name will be displayed in the channels tree.

URL

Specifies the address of the webpage.

File Name

Shows the name of the channel storage file.

Use the Security page of the Webpage Channel Properties dialog to specify the options for accessing a password-protected webpages.

Server requires logon

Check this option if the webpage is password-protected and requires you to specify the user login and password. NewzCrawler supports Basic and Digest authentications.

User

Specifies the user login.

Password

Specifies the user password.

Use the Maintenance page of the Webpage Channel Properties dialog to configure the channel-specific automatic updates options.

Enable automatic updating

Check this box to enable automatic updating of the channel. You can set up the updating period by specifying it in Days, Hours and Minutes.

Update channel on program startup

Check this option if you want to update the channel just after every program startup.

Use the Log page of the Webpage Channel Properties dialog to enable logging of the HTTP protocol. Logging allows you to view the HTTP headers and data received from the web servers.

Store server response

Check this option to enable logging of the HTTP protocol. Logging allows you to view the HTTP headers and data received from the web servers.

Click the weblog site under the **"My Blogs"** folder and choose **Channel | Properties** to display the weblog site properties window.

The pages available are:

General

Server Settings (choose "Custom..." in the Blog Service drop-down list to make it visible).

Use the General page of the Weblog Site properties dialog to configure the weblog site channel in order to access the web blog services using XML-RPC API.

Name

Specifies the name of the weblog site. The weblog site name will be displayed in the channels tree.

Blog Service

Allows you to choose the blogging service from the predefined drop-down list containing such well-known services like Blogger.com, Radio Userland, LiveJournal.com and TypePad. If your blog service isn't listed you can choose "Custom..." and configure the weblog site parameters in the "Server Settings" tab.

Username

Specifies the username for accessing the blog service.

Password

Specifies the password for accessing the blog service.

Do not use proxy settings

Check this option in order to bypass proxy server while accessing the blog service.

Blog hosted locally

Check this box if your blog service runs on your local web server (for example, your local Radio Userland software). So you won't be asked to connect to the Internet while accessing the blog service. Use this box only if you access the web through the dial-up connection.

If you don't find your blog service in the predefined services list, use the Server Settings tab to configure the Weblog Site manually. You'll have to choose "Custom..." in the **Blog Service** drop-down list in order to access this tab.

XML-RPC API

Specifies the XML-RPC API used for accessing the weblog service. NewzCrawler supports Blogger, MetaWeblog, MovableType and LiveJournal APIs.

Host

Specifies the Weblog service host address. For example: www.blogger.com

Endpoint

Specifies the Weblog service endpoint. For example: api/RPC2

Port

Specifies the HTTP port number used to connect to the weblog service (default value is 80).

Click the Search channel and choose **Channel | Properties** to display the Search Channel properties window. Use the pages on the left side of the window to configure selected search channel.

The pages are:



Options



Maintenance



Appearance

Search Channel properties

Use the Options page of the Search Channel Properties dialog to specify the primary parameters of the search channel.

Name

Specifies the name of the search channel.

Keywords

Specifies the search criteria.

Search options

Whole words

Searches for words only. (With this option off, the search keyword might be found within longer words.)

Case sensitive

Differentiates uppercase from lowercase when performing a search.

Suppress duplicate headlines

Hides the news items with identical titles.

Find Text In

Title

Check this box if you want to search within news Titles.

Description

Check this box if you want to search within news Descriptions.

URL

Check this box if you want to search within news source URLs.

Watch for news on channels update

When this option is off you'll have to update search channels manually. Check this option if you want to perform searching for all incoming news items in real-time.

Search Channel properties

Use the Maintenance page of the Search Channel Properties dialog to configure the channel-specific automatic updates options.

See also [folder maintenance options](#).

Enable automatic updating

Check this box to enable automatic updating of the channel. You can set up the updating period by specifying it in Days, Hours and Minutes.

Update channel on program startup

Check this option if you want to update the channel just after every program startup.

Search Channel properties

Use the Appearance page of the Search Channel Properties dialog to configure the appearance of the Search Channel.

Show news titles in News Balloon

Check this option to display the channel's news items in the News Balloon.

Show only summary

Check this option if don't want to see every news item in the News Balloon. When this option is checked, you'll see the single summary line in the News Balloon (for example: **Site name: 10 breaking news**).

Show news titles in News Ticker

Check this option to display the channel's news titles in the News Ticker.

The Weblog site may contain several blogs. Update the weblog site in order to download the list of available blogs from the weblog server.

Click the blog under the weblog site and then choose **Channel | Properties** to display the *Blog Site Properties* window. The Blog stores all the messages posted from NewzCrawler.

Receive N recent posts from server

Blog allows you to retrieve the latest posts, modify them and repost them to the server. Right-click the blog and choose Update menu to download the recent posts. Specify how many recent posts you'd like to download when updating the blog.

Here you can find several useful links which could be a good starting point in understanding news feeds, RSS, Blogs and so on.

RSS Frequently Asked Questions

RSSFAQ <http://www.voidstar.com/rssfaq>

News feeds catalogs

<http://www.syndic8.com>

News feeds providers

<http://www.moreover.com>

<http://www.newsisfree.com>

Blog Search Engines

<http://www.feedster.com/>

<http://www.blogdigger.com/>

Blog Services

Blogger.com

LiveJournal.com

TypePad

Blogware

Sorry, no help available for this item. Please tell developers about this problem.

NewzCrawler registration form

Program No.: _____

Last name: _____

First name: _____

Company: _____

Street and #: _____

City, State, postal code: _____

Country: _____

Phone: _____

Fax: _____

E-Mail: _____

*** Please do not forget to include your e-mail address. ***

*** We will use e-mail to communicate with you. ***

How would you like to pay the registration fee:

credit card - wire transfer - EuroCheque - cash

Credit card information (if applicable)

Credit card: Visa - Eurocard/Mastercard - American Express - Diners Club

Card holder: _____

Card No.: _____ Expiration Date: _____

Date / Signature: _____

OK Button

Applies changes you have made and then closes this dialog box.

Apply Button

Saves all changes you have made without closing the dialog box.

Cancel Button

Closes this dialog box without saving any changes you have made.

Use this dialog box to customize the order, visibility and size of the Channels Tree and News List columns.

Columns list

Columns list displays all available columns. Check the column box to make the column visible, uncheck it to hide the column.

Move up

Press this button to move the selected column up.

Move down

Press this button to move the selected column down.

Column width

Specifies the width of the currently selected column in pixels.

